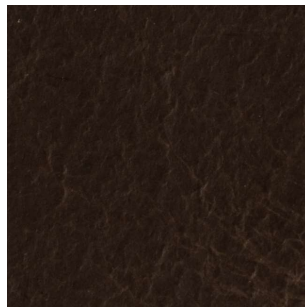


## „Vento“

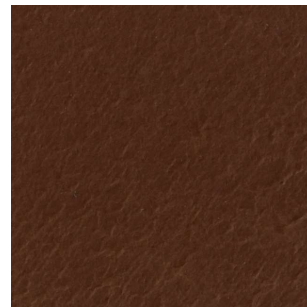
Typ: kombiniert gegerbte Gürtelspalt-Doppelcroupons  
Stärke: 2,8-3,0 mm  
Zurichtung: pull-up-finish, appretierte Rückseite  
Rohware: europäische Rindspalte



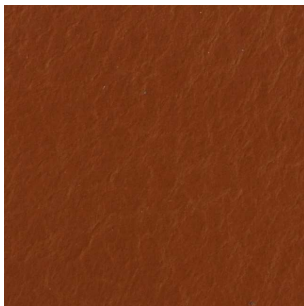
dark brown



cacao



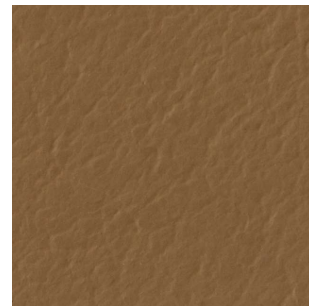
mid brown



chestnut



taupe



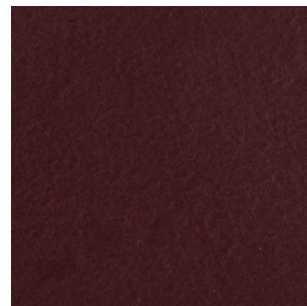
walnut



navy



blue



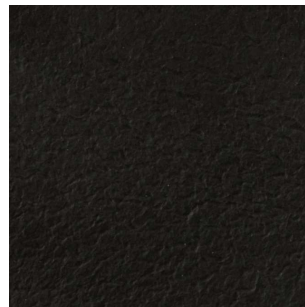
bordo

## „Vento“

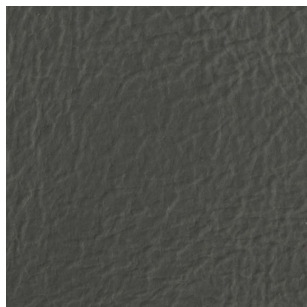
Typ: kombiniert gegerbte Gürtelspalt-Doppelcroupons  
Stärke: 2,8-3,0 mm  
Zurichtung: pull-up-finish, appretierte Rückseite  
Rohware: europäische Rindspalte



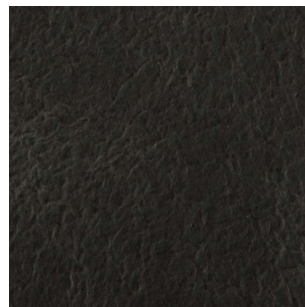
white



black



light grey



dark grey